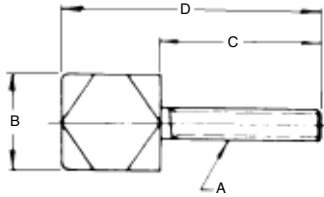


Quarter Turn Screws

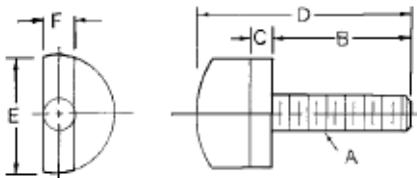


► Available hardened or unhardened black oxide finish, carbon steel

Not hardened Low Carbon Steel PART #	Hardened Low Carbon Steel PART #	Stainless Steel PART #	Thread A	B	C	D
QT-0	QT-10	QT-0SS	#10-32	1/2	1"	1-1/2
QT-1	QT-11	QT-1SS	1/4-20	3/4	1-1/4	1-7/8
QT-2	QT-12	QT-2SS	5/16-18	1"	1-1/2	2-1/4
QT-3	QT-13	QT-3SS	3/8-16	1"	1-1/2	2-1/2
QT-4	QT-14	QT-4SS	1/2-13	1-1/4	1-3/4	2-3/4

Long Style			Thread A	B	C	D
LQT-0	LQT10	-	#10-32	1/2	1-1/2	2"
LQT-1	LQT-11	-	1/4-20	3/4	1-3/4	2-3/8
LQT-2	LQT-12	-	5/16-18	1"	2	2-3/4
LQT-3	LQT-13	-	3/8-16	1"	2	3"
LQT-4	LQT-14	-	1/2-13	1-1/4	2-1/4	3-1/4

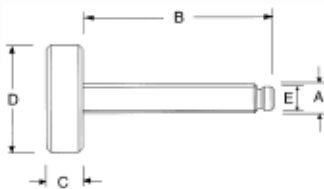
Half Turn Screws



► Carbon steel, black oxide finish
► Applications include using as locking tool for leaf and jig plates

PART #	Thread					
	A	B	C	D	E	F
HTS-510	#10-32	1"	3/16	1-11/16	3/4	3/16
HTS-525	1/4-20	1-1/4	3/16	2"	3/4	1/4
HTS-531	5/16-18	1-1/4	3/16	2-1/16	1"	5/16
HTS-537	3/8-16	1-3/4	1/4	2-11/16	1-1/16	3/8
HTS-550	1/2-13	1-3/4	1/4	2-3/4	1-1/4	1/2

Knurled Head Toggle Screws



► Heat treated steel, black oxide finish
► Three piece construction
► Pad swivels to allow for uniform clamping pressure

PART #	Thread				
	A	B	C	D	E
KHT-10	1/4-20	1-1/2	5/16	1"	.185
KHT-11	1/4-20	2"	5/16	1"	.185
KHT-12	5/16-18	1-1/2	3/8	1-1/8	.245
KHT-13	5/16-18	2"	3/8	1-1/8	.245
KHT-14	5/16-18	2-1/2	3/8	1-1/8	.245
KHT-15	3/8-16	1-1/2	7/16	1-1/4	.297
KHT-17	3/8-16	2-1/2	7/16	1-1/4	.297
KHT-18	3/8-16	3"	7/16	1-1/4	.297
KHT-20	1/2-13	2"	1/2	1-1/4	.405
KHT-22	1/2-13	3"	1/2	1-1/4	.405